

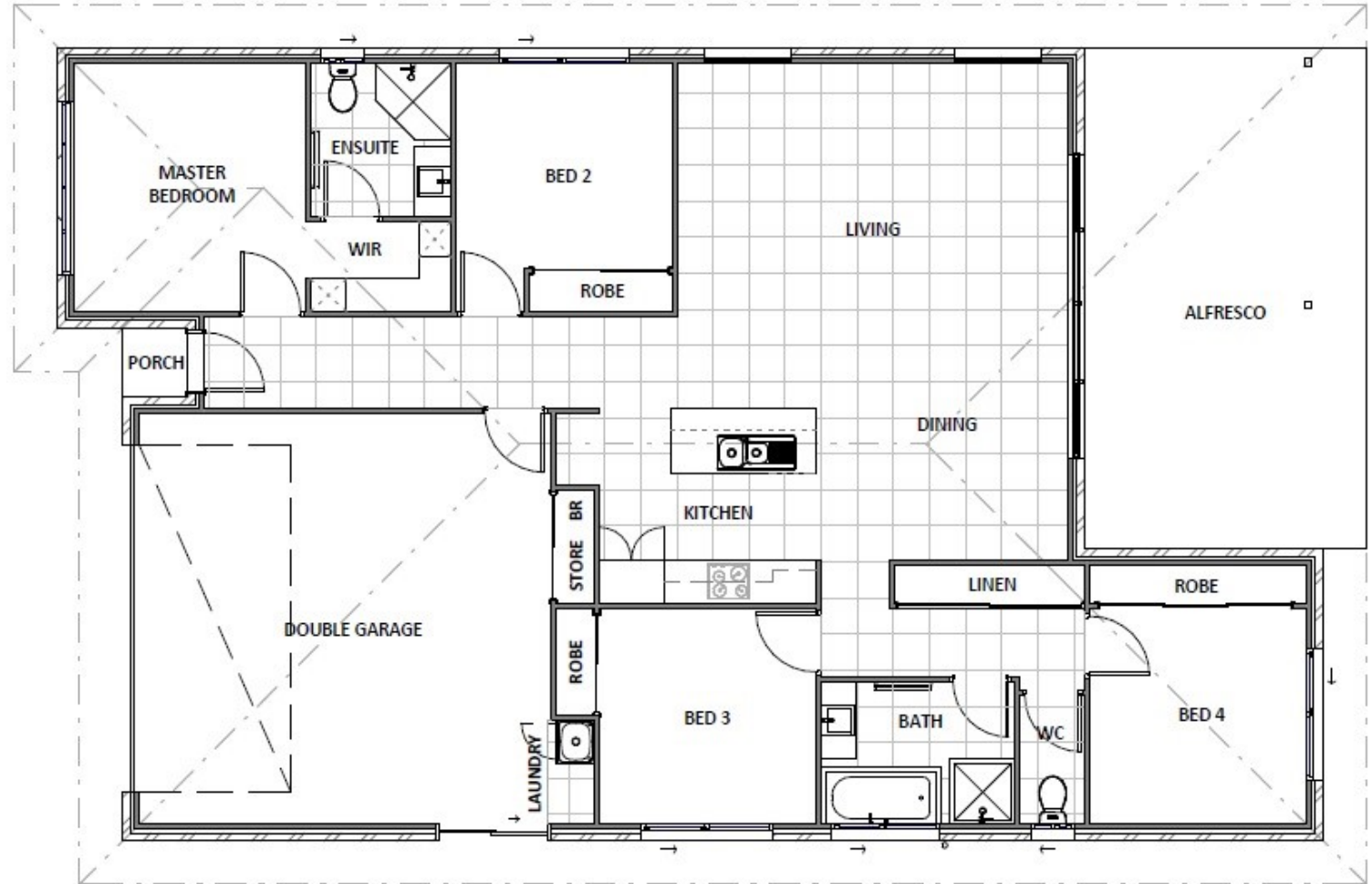
The Ashgrove



Dimensions

Living & Garage	162.0m ²
Porch	1.3 m ²
Alfresco	27.1m ²
Total	190.4m ²

Total Width	12.2m
Total Length	18.74 m



**ASPECT
HOMES QLD**

3 CLEMATIS STREET, GYMPIE, QLD, 4570
P - 5482 2232 E - info@aspecthomesqld.com.au
QBCC - 15020768 | ABN - 60 612 688 981