

GREEN *keeper*

The owners' shared love of golf is omnipresent in this home on Victoria's Bellarine Peninsula. Hugging dunes beside a first fairway, it touches the earth lightly, and inside and out become one.

STORY *Chris Pearson* | STYLING *Sarah Shinnars* | PHOTOGRAPHY *Jack Lovel*



EXTERIOR The house is designed to soak up the views of the golf course next door, but also to deflect stray balls. Willow, the owners' border collie, enjoys the landscaped garden – by Wickstead Works – which encompasses a carefully preserved moonah tree. Blackbutt cladding. Roof in Colorbond Surfmist.

“With that special
view of the golf
course, it was a
no-brainer.” HOMEOWNER

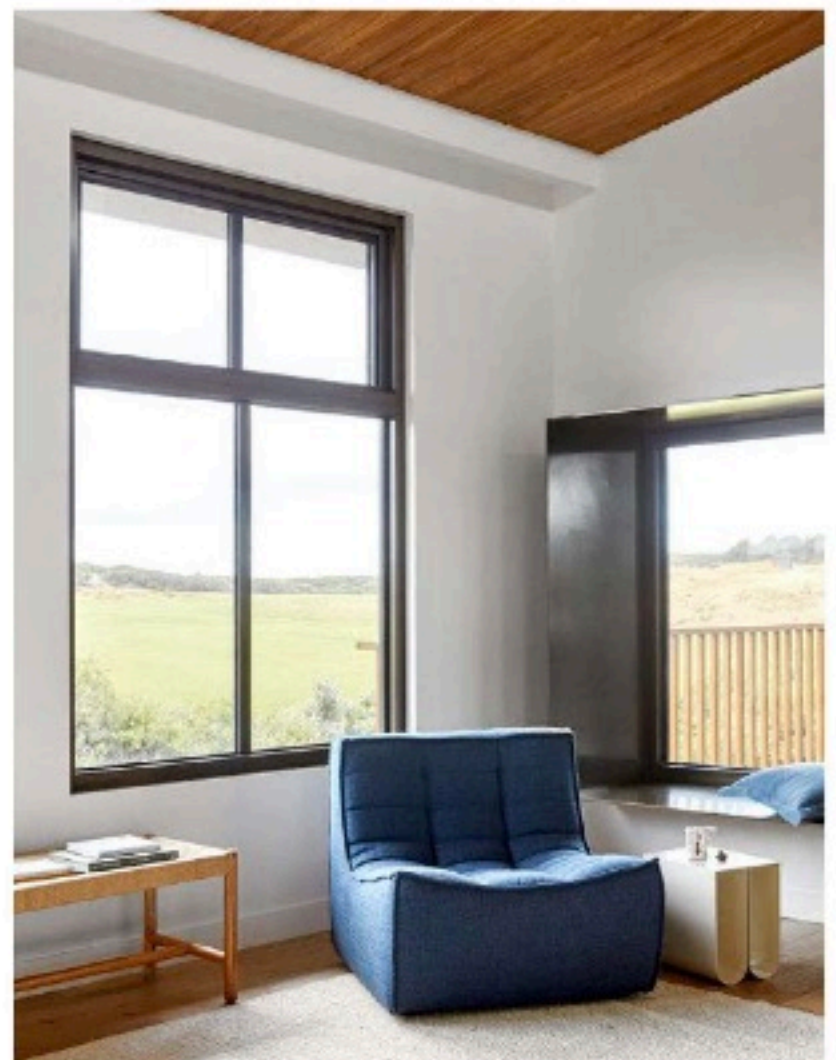


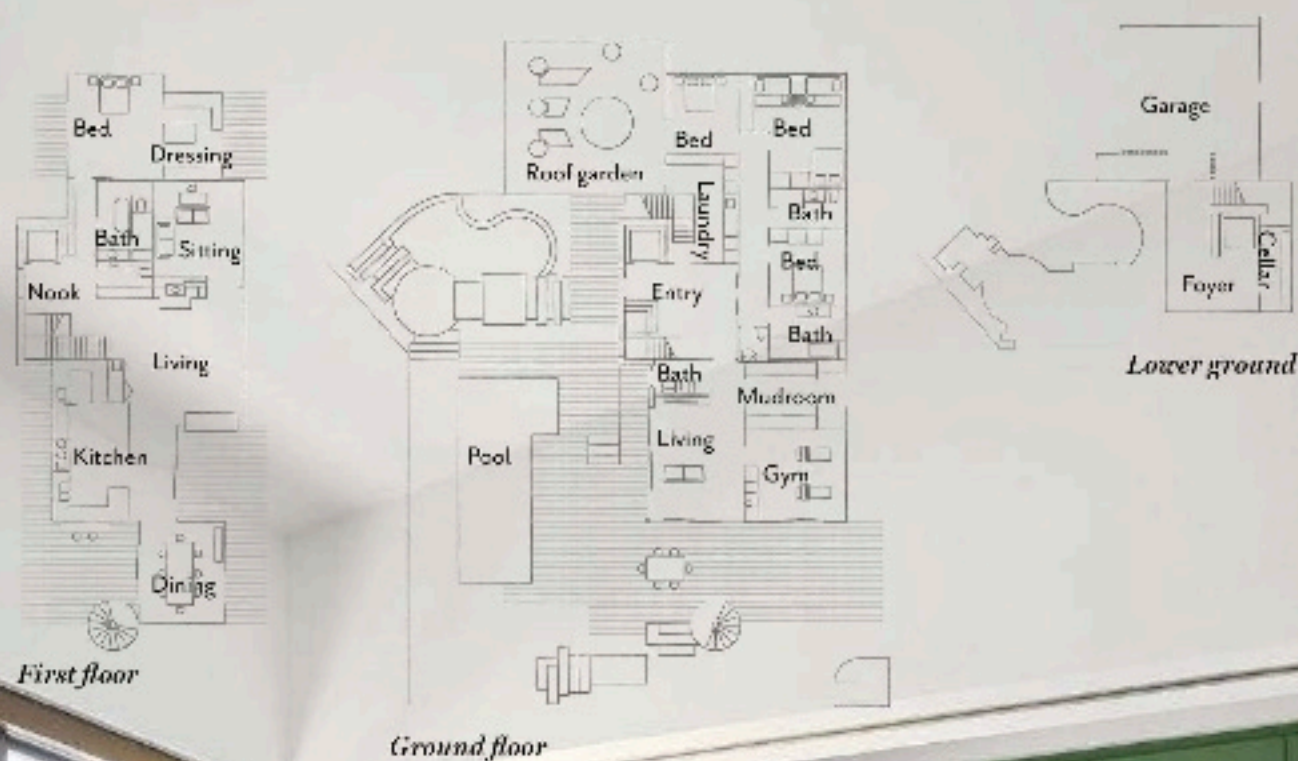


The owners of this wonderful weekend on Victoria's Bellarine Peninsula are golfing fanatics. So much so that, in their search for the perfect property for themselves and their three adult daughters, proximity to a golf course topped the wish list. Beside a first fairway, this new home couldn't be any closer; it is so close that architect Kirby Roper of Kirby Architects designed the timber facade to deflect stray golf balls. In this and other ways, she has blended the building so skilfully into the landscape that she has scored her own metaphorical hole-in-one. When the couple bought the property in 2020, it was squandered by a 1960s boxy bungalow with tired interiors. Strangely, it turned its back on the golf course and the ocean beyond on its southern side, views of which the couple were keen to harness. Having launched a drone to see what was possible, they were smitten.

"With that special view of the golf course, it was a no-brainer," says the owner. So they asked Kirby to design a new getaway, with living areas facing the golf course on one side and north on the other. ▶

LIVING *All Busy in the Sunlight* artwork, Georgie Gall. Cheminées Philippe 'Radiante' firebox, Wignells. Danish sofa, Nook Vintage. Ethnicraft 'Slouch' seat and 'Anchor' bench, both GlobeWest. Barwon high stool and fireplace in Bodega Freeform stone, both Eco Outdoor. Curved side table and Vitra 'Cork Family' stool, In Good Company. Ceiling in Evenex timber veneer, Elton Group. Aged Coastal flooring, Scandinavia Floors (throughout). Aluminium windows in Burnt Sienna, Red Crab Windows & Aluminium. Amalfi rug in Ivory, Tribe Home.





KITCHEN A custom blue-green hue works a treat in the separate kitchen, which is where the owner indulges her love of cooking. Joinery by SCLK. Viscount White granite benchtop, Corsi & Nicolai. Oven, Aga Australia. Cobar rangehood, Qasair. Aged Coastal flooring, Scandinavia Floors. Coffee machine, Breville. Where possible, the owner salvaged knobs, pulls and other items from the original house. ►



“The owners wanted something open, but humble...
with stature, but not imposing.” KIRBY ROPER, ARCHITECT

THE PALETTE

Dulux Natural White (living walls)

Dulux Crescendo Green

Dulux Land Light

LIVING Birdie the Brittany spaniel pauses a moment on one of the decks that look out to the canopy of the precious moonah tree. Ethnecraft 'Slouch' sofa in Old Saddle, 'Slouch' seat and 'Woodland' drum table, all GlobeWest. Tait rug in Olive, Tribe Home.



The brief called for a home that felt at one with the landscape. “The owners wanted something open, but humble, and nothing monumental, with stature, but not imposing,” says Kirby. “Above all, the home had to blend seamlessly with its coastal setting, minimising impact on the environment,” adds the owner. “I wanted the home to be quite generous, but still feel homely and cosy, with smaller areas for sitting and relaxing, as well as a separate kitchen and an outdoor shower.” Yes, a separate kitchen for this passionate cook to commune with her beloved Aga. And not facing the golf course. “It’s a privacy thing. I don’t want people waving at me when I am cooking,” she says, smiling.

The site was levelled except for a signature moonah tree. A keen conservationist, the owner retained the cedar lining boards, basins, tapware, door hardware, drawer pulls and light fittings from the old home and repurposed them here to give instant character. “My salvaging drove my wonderful builders crazy,” says the owner, laughing.

“We dug down and hunkered down into the site, earthing the house, while still obtaining ocean and golf course views by using multiple decks,” says Kirby. The ancient moonah, preserved and celebrated, influenced her design. “We related the levels of the decks to the moonah’s height and form. From the kitchen, it feels like you’re in a tree house, and from the decks, you feel nestled among the leaves and branches, while the foliage lends privacy to the outdoor spaces,” says Kirby.

Living areas, including sitting areas, dining, study, kitchen and main bedroom suite all occupy the first floor, which has decks on two sides, to the north to soak up the sun and the south to soak up views of the fairways, dunes and the Southern Ocean beyond.

Ground level, with three bedrooms and a sitting area is the daughters’ domain, while a roof deck sits atop the house. Flanked in timber battens to protect against wayward golf balls, an external spiral staircase has become an architectural feature in itself. “It anchors the property and connects the decks on all three levels,” says Kirby. Equally striking is the fluid, curved roofline, eschewing a simple right angle. Expressed inside and out, it takes its cues from the undulating dunes, the golf course and the ocean waves. “With the clerestory windows, it also allows us to filter the northern light throughout the interiors,” says Kirby.

The home sits easily in the landscape in other ways, too. Surrounding weatherboard beachhouses inspired the timber cladding. “We interpreted their battening by using simple blackbutt applied vertically. Over time, the ageing wood will express its own unique character,” she says. That sun-bleached facade is teamed with rammed-earth walls (“the colour of the bunkers,” says the owner; “soft and endearing, like a warm hug,” says Kirby), which ensure it melds smoothly with its setting. And timber screens are teamed with panorama windows – including an inviting window seat – set back into the building to ensure golf balls do not venture where they are unwelcome.

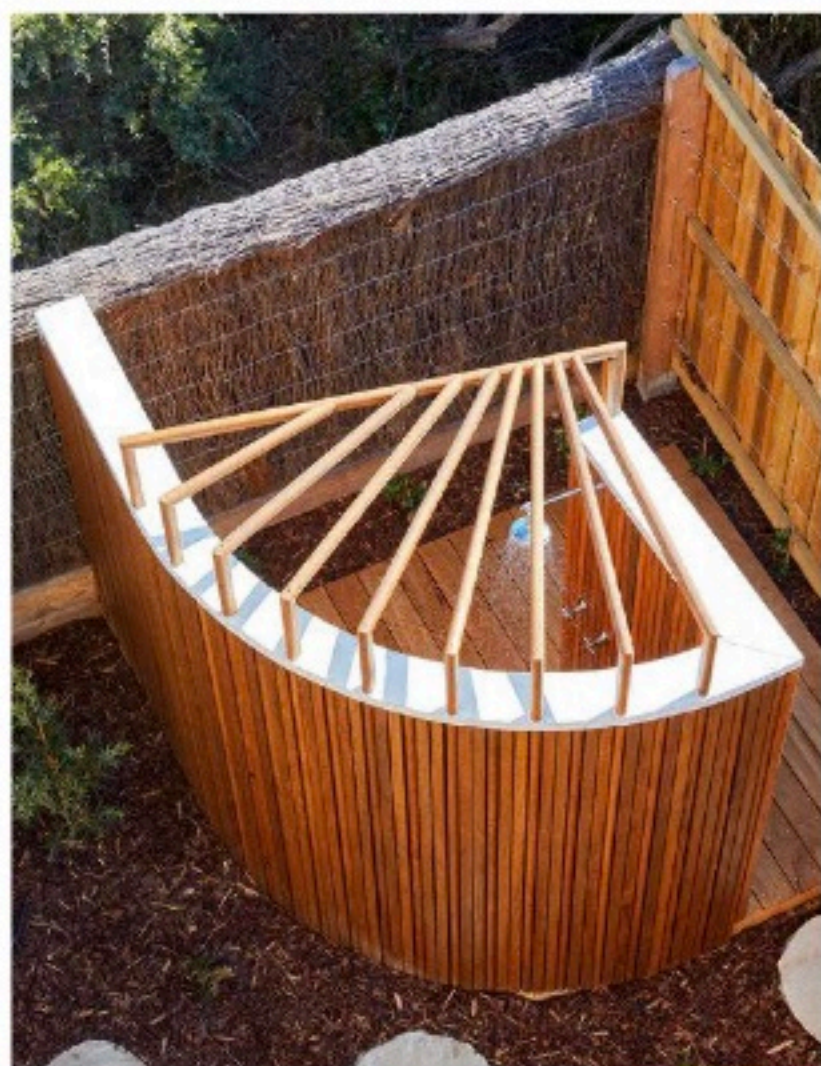
The external material palette continues inside, with timber cladding and rammed earth the perfect complements to a stacked-stone fireplace, all of which reflect the earthiness and craftsmanship that pervades throughout, while reinforcing an ever-present indoor-outdoor ►



THIS IS THE LIFE

Cleverly zoned with public and private areas, this weekender is a chameleon; the great entertainer one minute, intimate space the next, especially in winter, when the firebox comes into its own. "The house has different modes. It has a party informality in summer, but it's also perfect for the owners to enjoy time on their own or with their daughters as a family," says Kirby.

BATHROOM Reed glass shower screen, David McDonald Builders. Brodware City Plus wall set, E&S. Portland 3.0 Verona floor tiles, Geelong Tiles & Bathware. Subway wall tiles in Safi White, Tiento. Rammed-earth blocks, Earth Structures. **ENTRANCE** *Opposite top* Timber doors, Pickering Joinery. Navicula pendant, David Trubridge. **MAIN ENSUITE** *Opposite bottom left* The basin, taps and knobs were all salvaged from the original house. Mid Century Modern dimmable wall light, Lighting Collective. Towel, Tribe Home. **BEDROOM** *Opposite bottom right* Bunk beds, here crafted by SCLK, are a great solution for a weekender. Bedlinen, Tribe Home. Window seat (at far right) in aluminium, Red Crab Windows & Aluminium. ►



connection. Meanwhile, the natural palette boasts pops of colour, with the blue of the owner's beloved Aga, green kitchen joinery and an ever-expanding collection of artworks peppered throughout the house.

In a home that's so wonderfully fluid, both visually and in its versatility, the owner is hard-pressed to find a favourite feature, as the whole house winds itself around the family's lives and lifestyles.

"I love the extraordinary light," says the owner. "Kirby did an amazing job capturing that. And she has created a beautiful blank canvas for me to add more, such as artworks and wallpaper in the bathrooms." In short, the new home suits these golfers to a tee. With a bonus: "Yes, we collect a few golf balls," says the owner – which she recycles, of course.

Kirby Architects, Malvern, Victoria; 0466 088 330 or kirbyarchitects.com.au. Emerson & London Interior Design, Malvern East, Victoria; 0407 807 778.

POOL AND NORTH FACADE Kirby's daughter, Annabelle, and the owners' daughter, Josie, take in panoramic views from the first-floor and top-level decks. The pool by King's Pools and Spas is tiled in Pearl Jade mosaics from Geelong Tiles & Bathware. Sonoma sunloungers, GlobeWest. Landscaping, Wickstead Works. Rammed-earth blocks, Earth Structures. Tea-tree brush fencing, David McDonald Builders. An outdoor shower was a must for the owners, given their property's proximity to the ocean.



1

THE SOURCE

For a weekend by the coast, natural materials and a sand-and-sea palette are an elementary choice.



1 Evolution Tile artwork by Jan Vogelpoel, \$1280, Modern Times. 2 Aspen rug in Natural (170x240cm), \$1500, Armadillo. 3 FDB Møbler 'J83B' bench by Jørgen Bækmark, \$1650, Open Room. 4 Seagrass basket with rope twist handle, \$170/two, Living By Design. 5 Smeg 110cm freestanding cooker, \$10,990, Harvey Norman. 6 Eden square kitchen mixer, \$229.90, ABI Interiors. 7 Australian House & Garden bath towels in Clay, \$15-\$60 each, Myer. 8 Gubi 'Grasshopper' floor lamp, \$1280, Cult Design. 9 Ethnicraft 'Slouch' 3-seater sofa in Blue, \$3605, GlobeWest. 10 Yamaha Vinyl turntable, \$645, Harvey Norman. 11 Vitra 'Model A' side table, \$960, Space. For Where to Buy, see page 192. H&G