

Lake Kiowa Golf Course



**Par Three Course
Master Plan**

October 2023

Craig Coyne

Tom Coyne

Design Partner and Public Relations



Lawson Koltz

Business Manager



Johnathan Teal

Client Relations



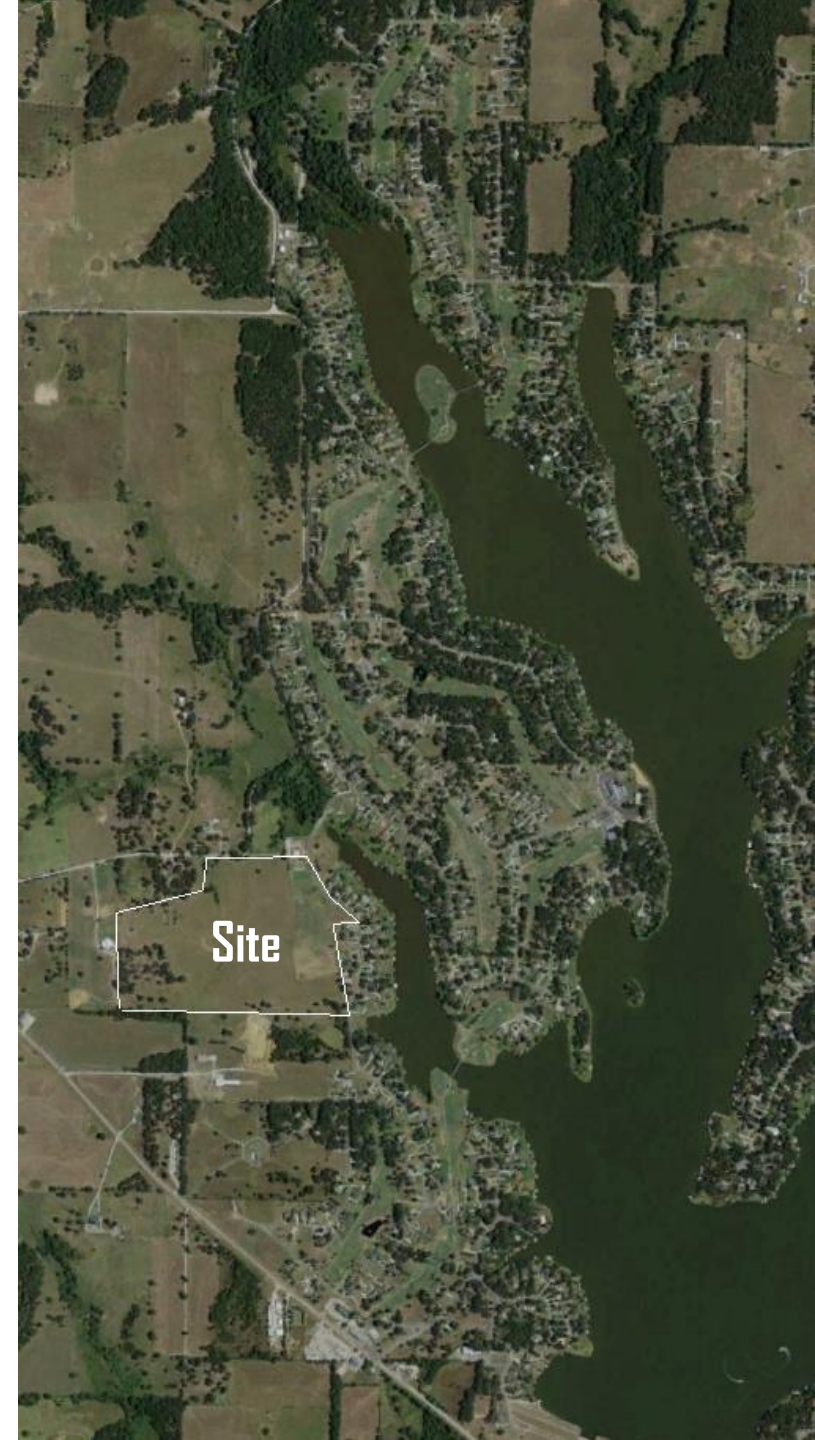
Colton Craig


Principal Designer



Why This Project?

- The Existing Golf Course Produced 57,000 Rounds Last Year
- Max Capacity for Lake Kiowa Should be 45,000 Rounds
- 30% of Rounds are 9-Holes or Less (17,100)
- Assuming Half of Those Players Play the Par Three Instead (8,550)
- Bringing to Championship to Course to 48,450 Rounds
- Estimating Additional 4,000 Rounds will be Played Instead of Championship Course = 44,450
- The Turf Grass Quality on the Championship Course will Dramatically Improve
- Estimating the Par Three Course will Attract 10,000 of Added Play From All Levels of Golfers
- Par Three Course is Estimating to Produce 20,000-25,000 Rounds



Golfweek Courses Pro More 

Par-3 courses hit the big time with surge in popularity at top golf resorts

Golf Digest

GD

The long view on golf's new fascination with short courses

The Cradle at Pinehurst is the latest example of the game embracing par-3 courses as fast, cheap and fun alternatives for golfers of all skills

LINKS
THE BEST OF GOLF

Golf's Short Course Craze

by TONY DEAR

The New York Times

Family-Friendly Short Courses Are Gaining Favor

Many golf communities are adding pint-size courses, which appeal to children as well as to parents who lack the time to play 18 holes.

 **Sports** World Cup Tennis Golf Motorsport Football US Sports Olympics Climbing Esports Hockey

The future of golf could be shorter than you think

By Tom Pilcher, for CNN

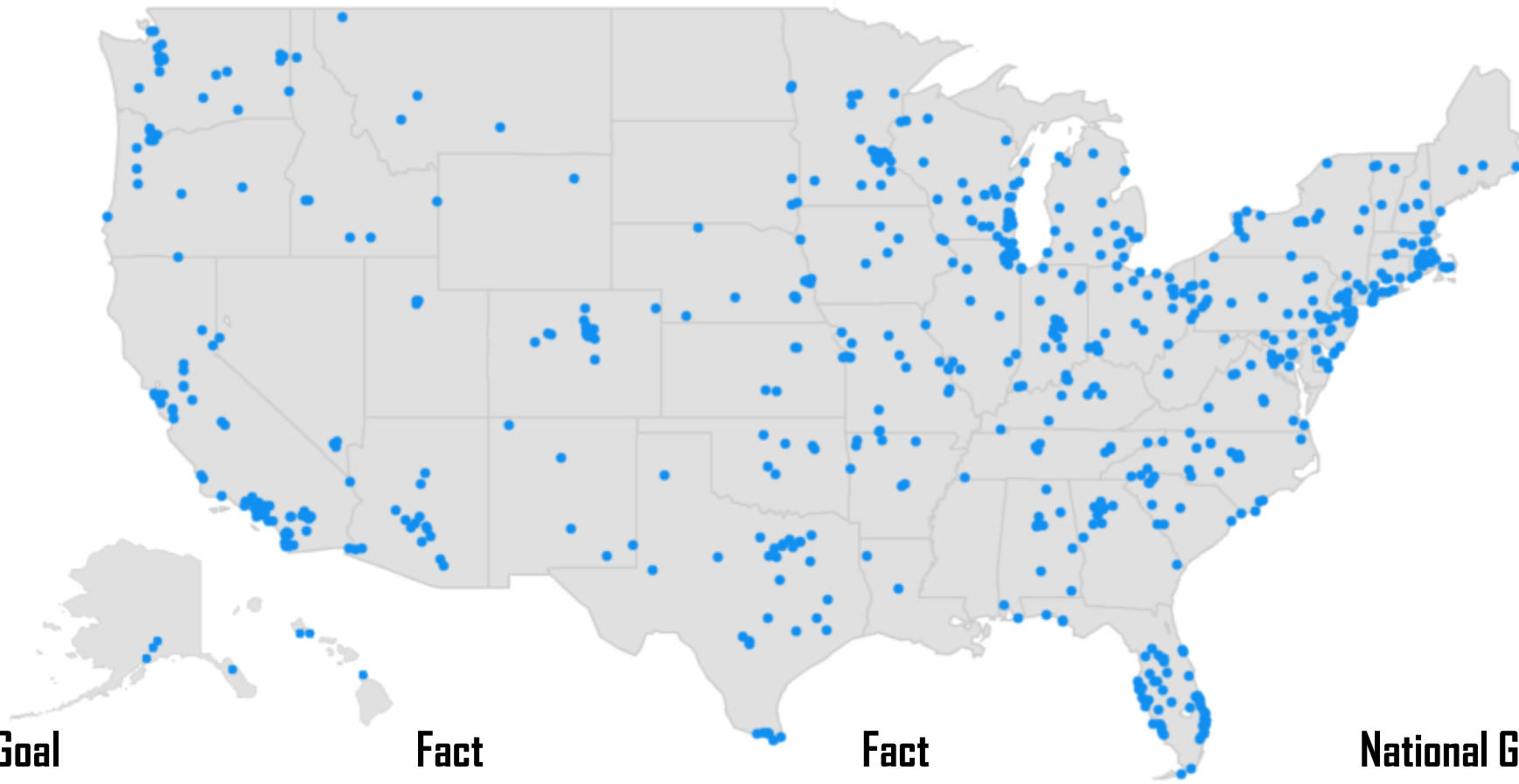
NGF
NATIONAL GOLF FOUNDATION

Fortnight **Spotlight** The Vault Services Membership Welcome2Golf About

Go back

Short and Sweet: Par 3 Golf Courses

Par 3 Locations in US



Local Goal

Design a **FUN** course for all levels of golfers and nongolfers and reduce rounds from the existing 18-hole course

Fact

There are close to 700 par 3 courses in the U.S., according to the NGF facility database

Fact

Overall, 80% of par 3 courses are of the 9-hole variety.

National Goal

Our goal is to be a top 10 short course

Existing Conditions



Base Map



Phase I



Existing
Driving Range

Parking
(20)

Putting
Green

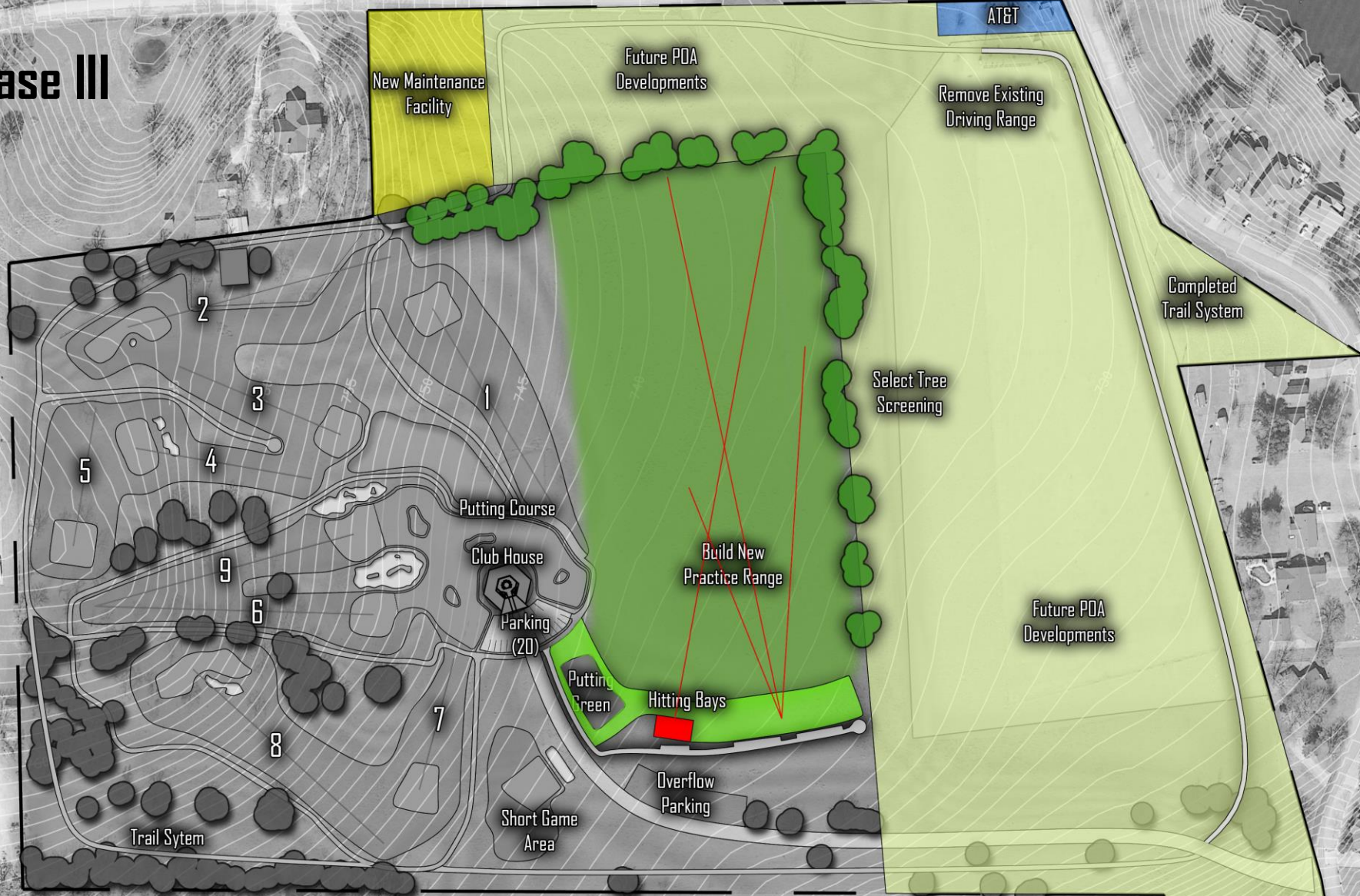
Short Game
Area

Overflow
Parking

Phase II



Phase III



Master Plan



Phase I



Existing
Driving Range

Parking
(20)

Putting
Green

Overflow
Parking

Short Game
Area

2

3

1

5

4

9

6

8

7

Hole #1

"Handshake"



126 yards

5054 sf green

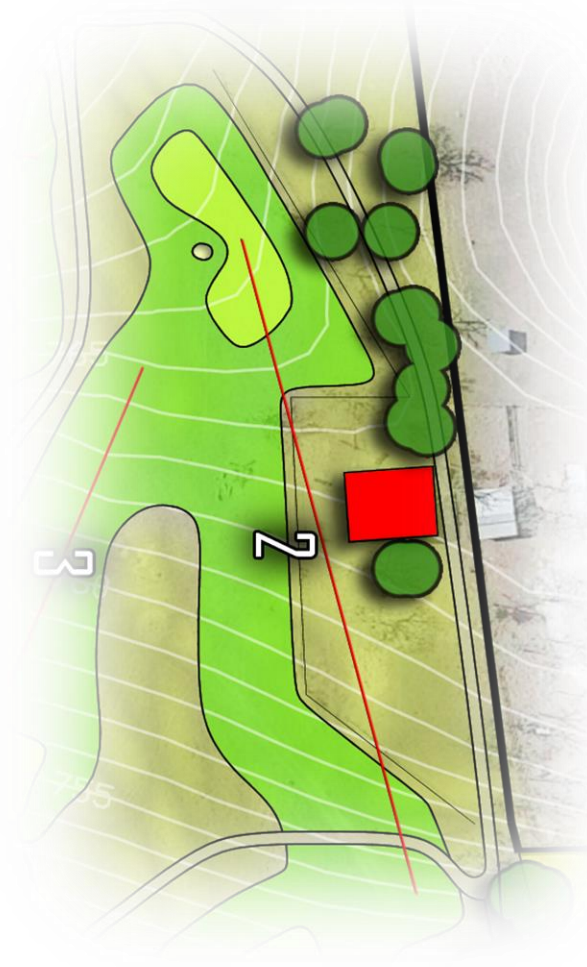
Welcoming players to the new par three course, the opening hole will exude an inviting charm, intentionally devoid of any hazards or intricate challenges. Positioned on the flattest terrain of the property, this inaugural hole, aptly named "Handshake," embodies a spirit of warmth and camaraderie, aiming to extend a friendly greeting to players as they embark on their rounds.

Crafted with a focus on maintaining an optimal pace of play, "Handshake" is designed to ensure a smooth start to the game, allowing players to ease into the rhythm of the course without feeling overwhelmed. This approach sets the tone for a relaxing and enjoyable golfing experience, encouraging players to forge a sense of connection and camaraderie right from the outset.



Hole #2

"Road"



145 yards

5517 sf green

The second hole's design will be inspired by the famous 17th Road Hole at The Old Course at Saint Andrews. The Green will be designed in dimensions and contours to exactly 75% of the original green. A deep pot bunker forces itself into the greens complex and should be avoided at all costs.

Adding to the course's allure, a quaint old barn will grace the right side of the tee shot, reminiscent of the timeless presence of the Old Course Hotel on the original hole. This thoughtful inclusion infuses the design with character and nostalgia, fostering an engaging atmosphere.

The second hole will be a fun and respectful nod to one of golf's most ancient holes. The Craig and Coyne team is voyaging to Scotland for a study trip in the spring of 2024 where we will examine the original hole in the flesh.



Hole #3

"Lakeview"



94 yards

4538 sf green

The third hole will be the first downhill shot on the round. The green will be reared by a pond, but half a mile away, the best view of Lake Kiowa will be very present in the backdrop half a mile away. The smaller green will reward precision from the sub-100-yard hole.

The third hole marks the start of downhill tee shots, offering a striking view of the green nestled beside a tranquil pond. Despite its shorter length, the sub-100-yard hole demands precision, rewarding players who can navigate the intricacies of the smaller green. Half a mile away, the captivating backdrop of Lake Kiowa adds a touch of natural beauty, seamlessly blending with the course's landscape and enhancing the overall experience. This harmonious fusion of golf and scenic serenity makes the third hole a highlight of the course.



Hole #4

"Windmill"



95 yards

4542 sf green

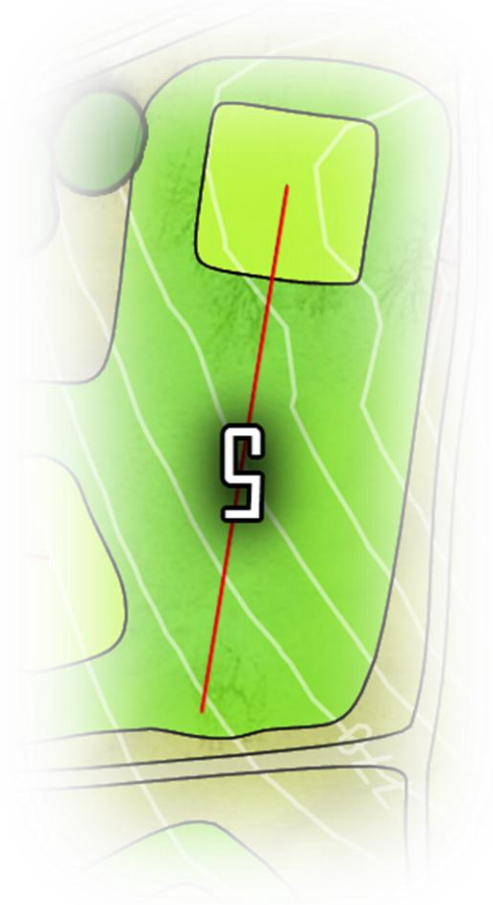
As players advance to the fourth hole, they'll encounter the exhilarating challenge of the course's first truly uphill shot. Strategically positioned, two bunkers will guard the right side of the green, presenting an engaging obstacle and demanding skillful maneuvering, especially for those aiming for challenging pin placements along the right edge. However, the left side of the green will offer a more welcoming approach, accommodating players who may struggle with gaining elevation, ensuring an inclusive and enjoyable experience for all.

Adding to the course's distinctive charm, the backdrop of the hole will feature a windmill, further accentuating the vibrant "Texas Ranch" theme woven into the fabric of the course.



Hole #5

"Infinity"



75 yards

4969 sf green

The fifth hole emerges as a short and sweet hole. Positioned at the highest point across the 52-acre expanse, a modest plateau serves as the unique location for the green. This exceptional land formation provides the perfect canvas for what golf architecture connoisseurs recognize as an "infinity green," a design element that seamlessly merges the edges of the green with the horizon, creating an illusion of boundless space.

In this remarkable setting, the backdrop of the hole dissolves into an uninterrupted vista of the open sky, with the pin flag appearing to delicately hover atop the distant horizon line. This surreal visual effect elevates the player's experience, offering a profound sense of awe. Earlier this year, the Craig and Coyne team embarked on a research journey to Long Island, NY, where they discovered the 18th hole at the National Golf Links of America, serving as the quintessential exemplar of the "infinity green" design.



Hole #6

"Highpoint"



149 yards

4639 sf green

Offering a breathtaking vista from one of the property's elevated vantage points, the sixth hole presents a dramatic downhill shot, cascading 21 feet from tee to green. Enclosed within a picturesque grove of majestic oak trees, the tee shot will be a visual marvel.

The bunker positioned on the left will serve a dual purpose, functioning as a "double duty" greenside bunker for both the sixth and ninth holes, adding an efficient element to the course's layout and fostering a sense of continuity and coherence throughout the design.

Given the longer nature of this hole, the green's complex will be subtly contoured, featuring softer undulations than most other greens on the course. This deliberate design choice aims to strike a balance between challenge and playability, ensuring that players are met with a fair yet engaging test of skill as they approach the green.



Hole #7

"Cowboy"



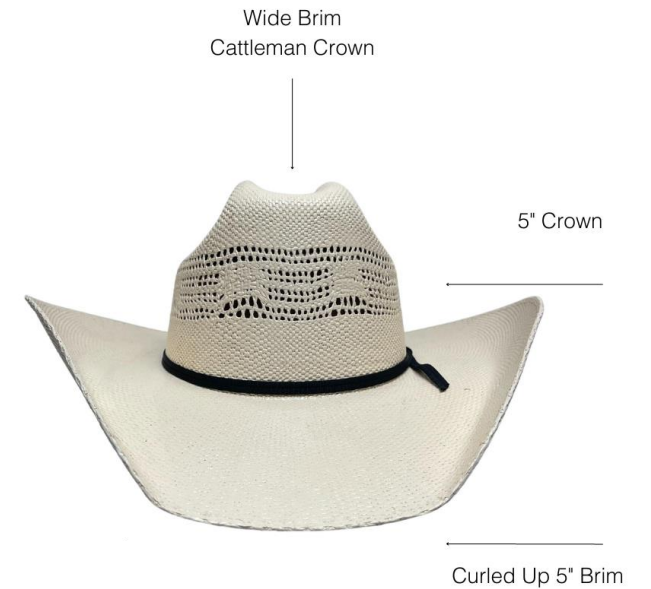
73 yards

4660 sf green

The seventh hole presents a striking contrast, playing towards an expansive open field and claiming the title of the shortest hole on the property. Despite its limited length, the hole promises to captivate players with a green that exudes a vibrant personality.

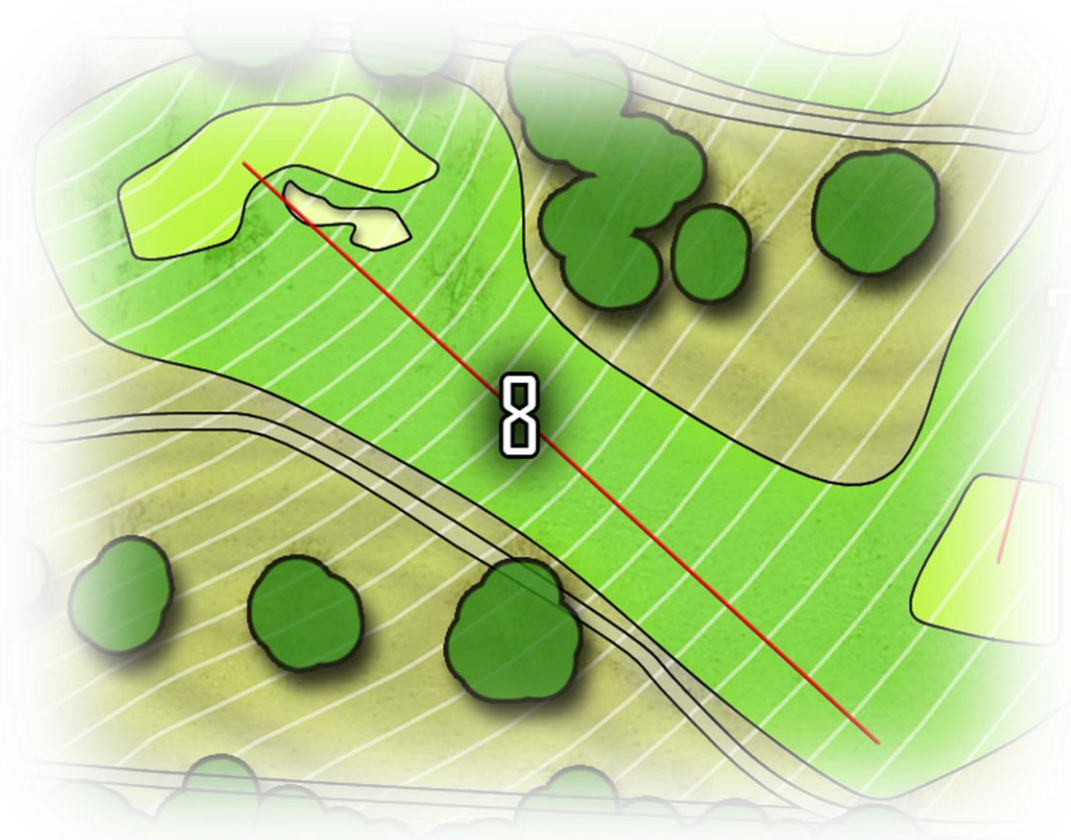
Reflecting a long-held vision of Craig and Coyne, the green design draws inspiration from the contours of a cowboy hat, infusing a touch of whimsy and creativity into the course's landscape.

While this design concept is a playful and imaginative interpretation, it is important to note that it will not replicate the dramatic dimensions of an actual cowboy hat, ensuring a tasteful and harmonious integration within the golf course's overall aesthetic. This inventive green design is poised to become a centerpiece of conversation, sparking intrigue and delight among players and visitors alike.



Hole #8

"Little Wolf"



138 yards

6035 sf green

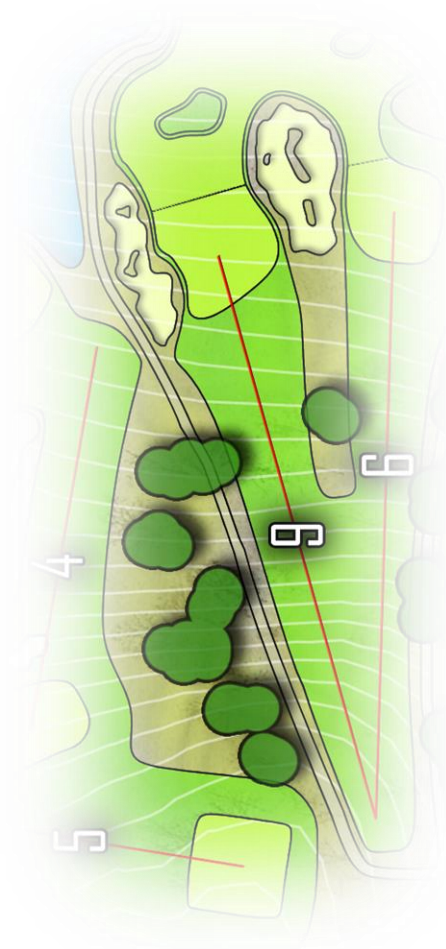
Nestled within a picturesque green setting, the eighth hole boasts a striking feature—an encompassing center bunker that divides the green. The uphill approach to this hole will make the features visible as they look back into the players.

The undulating contours of the land give rise to a uniquely adventurous and enjoyable putting surface, adding an element of excitement toward the end of the round.



Hole #9

"Home"



144 yards

5919 sf green

Sharing the teeing ground with the sixth hole, the final hole offers a dynamic finish, teeing off from the property's high point and descending gracefully towards the clubhouse. The green poses a formidable challenge, flanked on both sides by integrated bunkers that seamlessly blend into the course's organic aesthetic. The green harmoniously connects with the newly designed putting course, creating a seamless transition and a satisfying conclusion to the round.

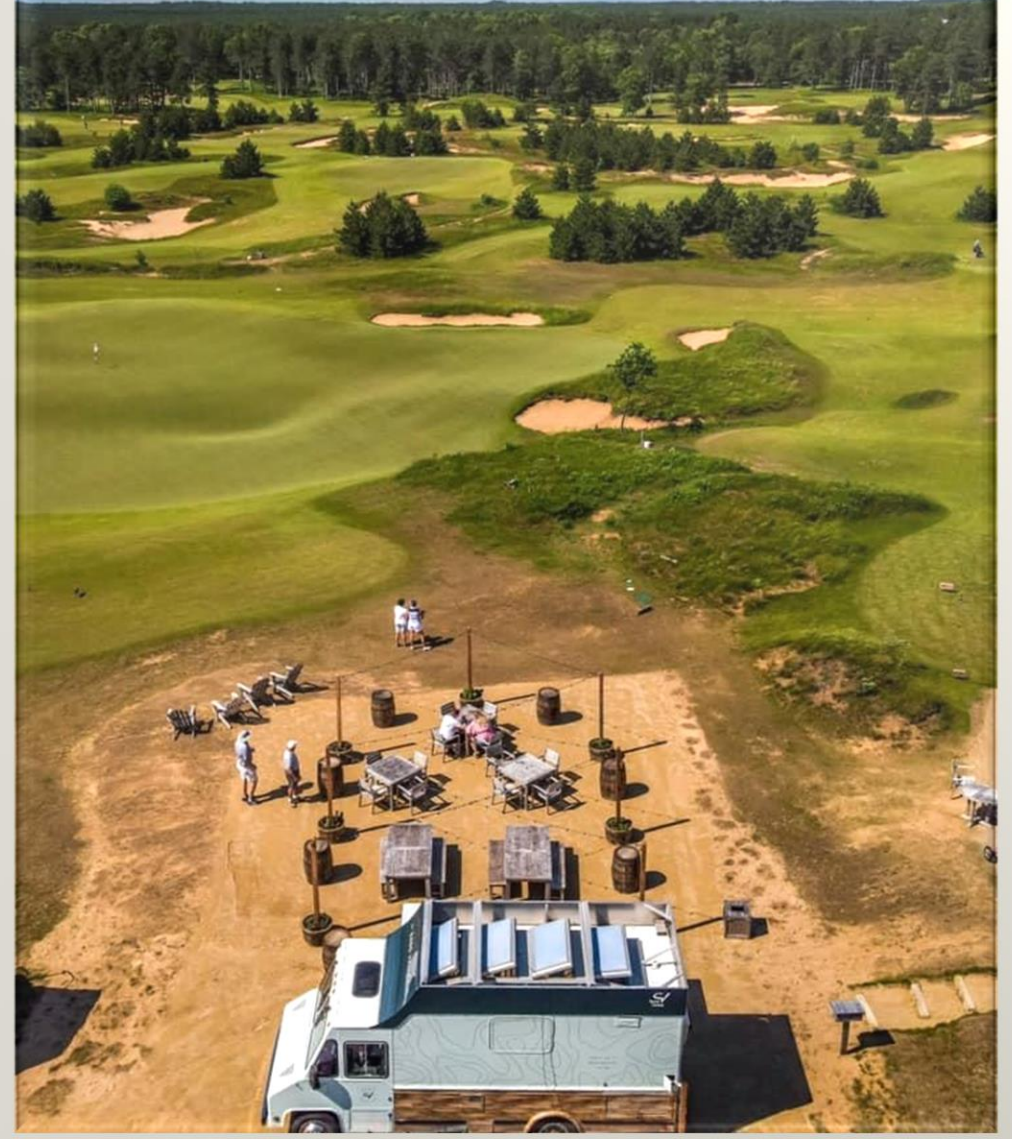
Anticipating the thrill of completion, the clubhouse stands ready to offer a well-deserved refreshment, yet we anticipate that many players will find themselves irresistibly drawn back to the first tee, eager to relive the joy and excitement of the course.



Phase 1



Pre-Clubhouse Function



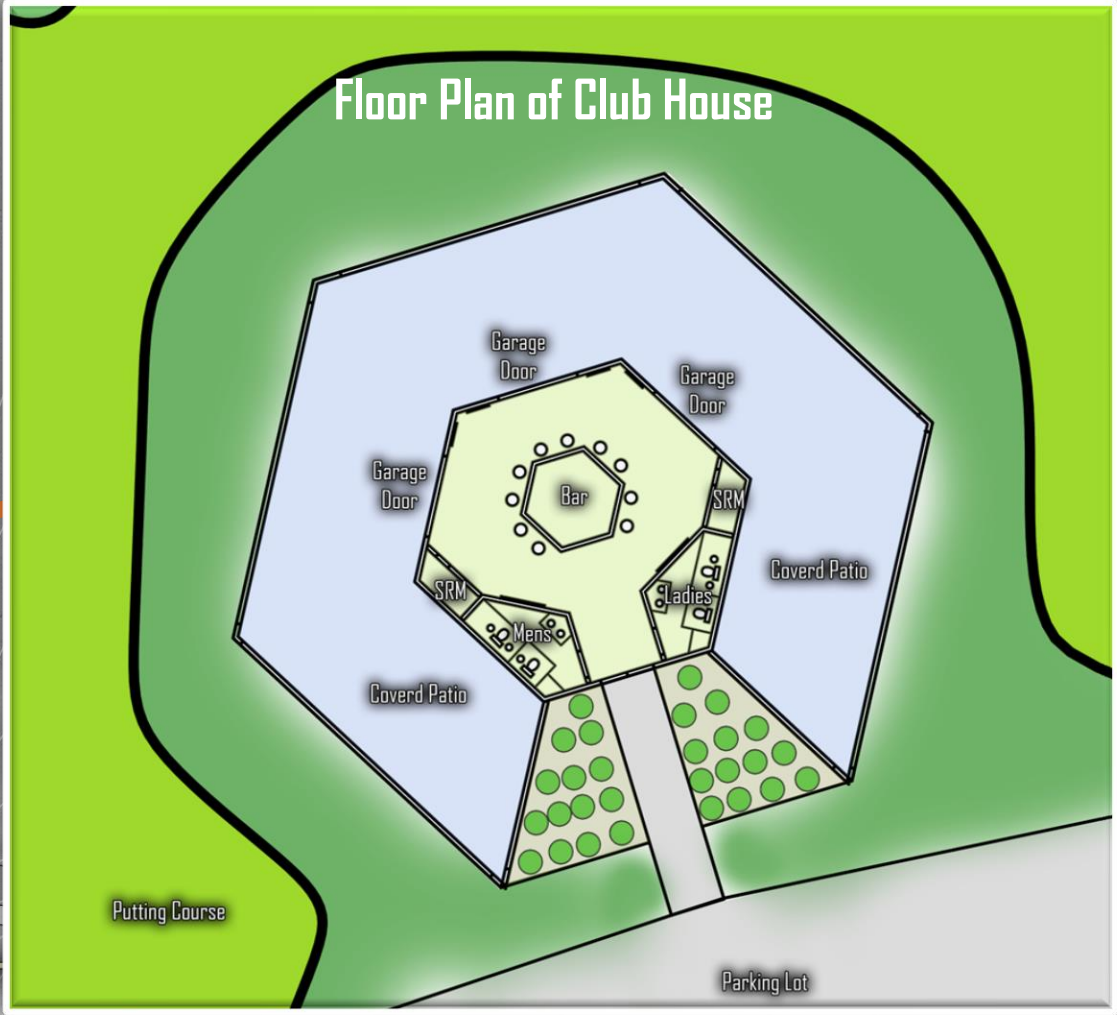
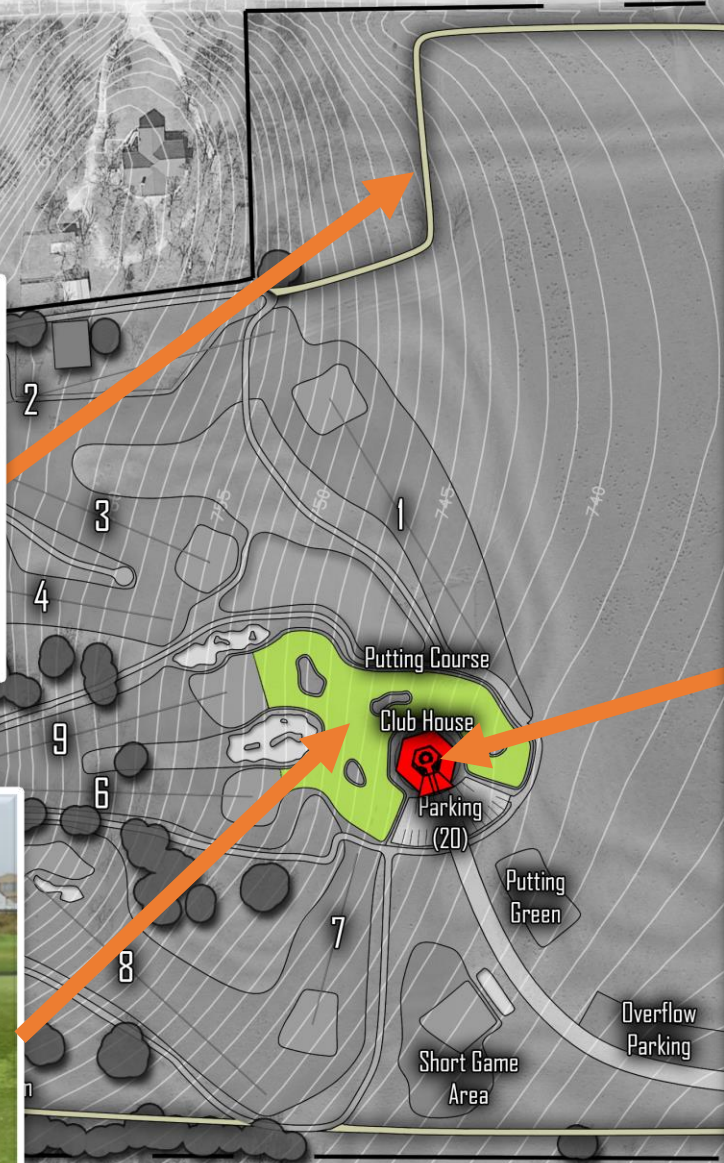
Phase II



Trail System



Putting Course



Floor Plan of Club House

Phase III



***Phase III Funded by POA

Questions? Phase I

