

# CORPORATE EVENT PACKET

---



---

8601 Monticello Rd, Lenexa, KS 66227  
powdercreek.com  
(913) 422-5063



# TABLE OF CONTENTS

---

- Powder Creek Welcome and Contacts -----pg. 3
- Hours of Operation ----- pg. 4
- Games and Fees --- -----pg. 5
- Headcount / Course Closure Policy-----pg. 6
- Pre-Arrival Checklist -----pg. 7
- What PC Provides for Events -----pg. 8
- What PC Does NOT Provide for Events-----pg. 9
- Inclement Weather Policy-----pg. 10
- New Shooter Guide-----pg. 11
- Course Map-----pg. 12
- Rules, Regulations, and Waiver-----pg.13-14
- Outro Page (ft. Office Puppy Jet)-----pg.15



**The Powder Creek Staff and Board of Directors thank you  
for choosing our facility to host your event!**

This packet includes an overview of what to expect for your event and what is available for your use while on the premises. There are suggestions for items you may want to bring for your shooters, our rules and regulations, and a copy of our safety waiver form. **The Powder Creek safety waiver is required for every individual who will be on property.** If you have questions, comments, or concerns, don't hesitate to contact us anytime via phone or email. We are excited to have your group join us for a one-of-a-kind experience. Thank you, and see you soon!

**Jason Spengel**

*General Manger*

✉ Jason@powdercreek.com

☎ (913) 609-7843

**Austin (Billy) Williams**

*Assistant Manger*

✉ AustinW@powdercreek.com

☎ (913) 207-9799

**Jessie Steffee**

*Lady of the Leagues*

✉ Jessie@powdercreek.com

**Kat Wilson-Hamilton**

*Event Coordinator*

✉ kat@powdercreek.com

WELCOME



# HOURS OF OPERATION

## **SUMMER HOURS:**

**Begin March 12th, 2025**

- Monday: Closed
- Tuesday: Closed
- Wednesday: 9 am- 9 pm
- Thursday: 9 am- 9 pm
- Friday: 9 am- 5 pm
- Saturday: 9 am- 5 pm
- Sunday: 10 am- 5 pm

## **WINTER HOURS:**

**Begin November 5th, 2025**

- Monday: Closed
- Tuesday: Closed
- Wednesday: 10 am-5 pm
- Thursday: 10 am- 5 pm
- Friday: 10 am- 5 pm
- Saturday: 10 am- 5 pm
- Sunday: 10 am- 5 pm

Off Hours Access is Available for Set-Up & Tear-Down if Necessary. Please Let Our Team Know ASAP if You Plan to be Here Before or After Our Regular Hours. Fees Will Accrue if Running Early / Late and in Clubhouse.

**Before and After Hours Fees are not prorated.**

**Powder Creek will NOT open on a Monday or Tuesday.**

**BEFORE HOURS FEES = \$150 PER HOUR**

**AFTER HOURS FEES = \$300 PER HOUR**

**\*Hours Change With Daylight Savings Time\***

**Registers Close 30 Minutes Before Clubhouse**



# GAMES & FEES\*

ACCEPTED METHODS OF PAYMENT INCLUDE: CASH, CARD, OR CHECK. NO TAP TO PAY OR ACH TRANSFERS.

## SPORTING

### CLAYS

50 Clays = \$31.50 per Shooter

100 Clays = \$45.00 per  
Shooter

## FACILITY FEE

\$5 per Attendee

## TRAP

1 Round (25 Targets) =  
\$9.75

## GOLF CARTS

### Powder Creek

4/Passenger = \$85.00

6/Passenger = \$110.00

### 3rd Party \*\*

4/Passenger = \$95.00

6/Passenger = \$190.00

**\*\* Please Notify Powder Creek Staff  
IMMEDIATELY if you need more than  
20 carts for you event.**

We will secure any additional golf carts  
through a 3rd party vendor, and apply a  
10% fee to the pricing listed above. 3rd  
Party Pricing is Subject to Change.

## SKEET

1 Round (25 Targets) =  
\$9.75

## 5-STAND

1 Round (25 Targets) =  
\$10.75

**\*POWDER CREEK'S BOARD OF DIRECTORS RESERVES THE RIGHT TO CHANGE  
PRICING (UP OR DOWN) AT ANY TIME. ALL PRICE CHANGES THAT OCCUR WILL BE  
LIVE, AND HONORED IMMEDIATELY. POWDER CREEK WILL NOT LOCK IN RATES.**



# TARGETS & HEADCOUNT

## 50 CLAYS PER SHOOTER

- 12 Station Blue Course ONLY.
- At least 30 shooters are required to shut down the course.
- Up to 24 Teams Allowed (1-12A & 1-12B)
- Recommended 5-Person Teams.

## COURSE CLOSURE POLICY

- Minimum of 30 Shooters Required to Reserve a Course / Calendar Date.
- If 30 Shooters are not present, the course will not be shut down. We will set you up as a standard walk-in group.
- Powder Creek Needs a Finalized Headcount ONE WEEK before event. If accepting walk-ins / open registration, you need a HEADCOUNT CAP so we can properly plan and advertise.
- Powder Creek will not make day-of adjustments to course,

## 100 CLAYS PER SHOOTER

Number of stations will be assigned based on the headcounts below:

- **30-60 People:** Limited to the 12 Station Blue Course. **5 Person Teams = Max of 12 Teams.** **4 Person Teams = Max of 15 Teams.** Approximately 0-3 "B Squads" on Stations 4, 6, and 12.
- **61-85 People:** Limited to a 15 Station Course. **5 Person Teams = Max of 17 Teams.** **4 Person Teams = Max of 22 Teams.** Approximately 2-7 "B Squads" on Odd Numbered Stations.
- **86-120 People:** Limited to a 20 Station Course. **5 Person Teams = Max of 24 Teams.** **4 Person Teams = Max of 30 Teams.** Approximately 4-10 B Squads.
- **121-200 People:** Limited to a 25 Station Course. **5 Person Teams = Max of 40 Teams.** **4 Person Teams = Max of 50 Teams.** Approximately 15-25 B Squads.
- Recommended 5-Person Teams



# PRE-ARRIVAL CHECKLIST



- 
- **BRING YOUR OWN SHOTGUN- We do NOT Rent or Sell Shotguns**
    - \*\*\* “Sporting” or “Hunting” Style Shotguns ONLY
    - \*\*\* **NO Home Defense, AR Platforms, Pistol Grips, or Magazines**
    - \*\*\* Must Have a 24 Inch Barrel or Longer
  - **ARRIVE WITH AN UNLOADED SHOTGUN- Please Unload All Shotguns Before Traveling**
    - \*\*\* Action MUST STAY OPEN When Not Actively Shooting
    - \*\*\* Shotgun MUST BE UNLOADED When Not Actively Shooting
    - \*\*\* These Regulations Will Be Enforced Anywhere on the Property
  - **BRING TARGET LOAD AMMO ONLY- Target / Lead Loads ONLY**
    - \*\*\* **Size 7.5, 8, or 9 Shot Only**
    - \*\*\* 2 3/4 Inch Long Shells Only
    - \*\*\* 1 1/8 oz is the MAX shot weight
    - \*\*\* Powder Creek has 12, 20, & 28 Gauge Shells Available for Purchase
  - **BRING EYE AND EAR PROTECTION- Eye and Ear Protection MUST BE WORN AT ALL TIMES While on the Property**
    - \*\*\* Sunglasses / Prescription Glasses are ACCEPTABLE
    - \*\*\* Foamy Earplugs are ACCEPTABLE
    - \*\*\* Powder Creek has Eye and Ear Protection available for purchase
  - **SIGNED SAFETY WAIVER IS REQUIRED WHILE ON PROPERTY- There is a Copy Included in this Packet as well as Access to our Online Form**
    - \*\*\* Powder Creek Requires Safety Waiver on File **whether or not you’re shooting**
    - \*\*\* Must Be Present for Safety Speech to Participate

# POWDER CREEK PROVIDES:

Here is what your facility fee covers, and the services Powder Creek will provide for you!



## 01 Clubhouse

- Full Use of Clubhouse and Patio
- Tables and Chairs (Seating for 72 Inside, 32 on Pavilion, Plus a Gazebo)
- Use of Entire Kitchen Area
- Full-Service Restrooms

## 02 Resources

- Ice Machine
- Ten Standard Sized Coolers (4 Bigger, 6 Smaller)
- Scorecards with your Business / Sponsor Logo
- Clipboards and Pencils
- Limited Additional Items Such As: Tape, Scissors, Zip Ties, Tools

## 03 Services

- Safety Briefing by Powder Creek Staff
- Sponsor Signs Set up at Stations by PC Staff (by request only).
- Coolers Set up at Stations by PC Staff (by request only).
- Trash Collection

## 04 Misc.

- Food Warming Rack
- Large Coffee Pot with Extra Pots (Coffee Supplies Not Included)
- Microphone and Speaker for Announcements
- Pattering Board
- Archery Range
- BB Gun Range
- Catch and Release Fishing Pond

# POWDER CREEK DOES NOT PROVIDE:

Here is what our facility **does not cover**. These items will be your responsibility to secure, or to notify us that you need help securing.



***POWDER CREEK DOES NOT RENT OR SELL SHOTGUNS***

---

- 01 Clubhouse**
- Powder Creek Staff Does Not Arrange Tables, Chairs, or Set Up the Clubhouse for your Event / Registration
  - Limited Access to Refrigerator
  - PUBLIC WIFI ONLY- Please review requirements for your company card readers if bringing your own (Square, Shopify, SumUp, etc...)

- 02 Resources**
- Water, Soda, or Any Other Beverages are Not Provided
  - Food, Snacks, or Catered Meals are Not Provided
  - Eye or Ear Protection is Not Provided (unless previously discussed and paid for by event)
  - Ammo is Not Provided (unless previously discussed and paid for by event)

- 03 Services**
- Powder Creek Does Not Load or Unload your Vehicles
  - Powder Creek Does Not Set Out Supplies or Hang Gate / Wall Banners
  - Powder Creek Does Not Provide Sporting Clay Course Shuttles / Rides
  - Powder Creek Does Not Pre-Set Ammo on Course
  - Powder Creek Does Not Keep Score / Pull for Your Event(s)

- 04 Misc.**
- PC Does Not Have Archery Equipment for Rent or Sell
  - PC Does Not Have BB Guns or BB Equipment / Ammo for Rent or Sale
  - PC Does Not Have Fishing Equipment for Rent or Sale



# **INCLEMENT WEATHER POLICY**

## **LIGHTNING POLICY**

Powder Creek allows shooting in the rain. However, if lightening is present within a TEN MILE RADIUS, then all individuals will be asked to vacate the shooting grounds and take shelter indoors.

## **TORNADO POLICY**

If a tornado warning occurs, we suggest that all individuals vacate the property and seek shelter elsewhere due to the fact that **Powder Creek does not have any form of subterranean shelter or basement.** If dire circumstances arise and individuals are still on property, Powder Creek does have an emergency action plan in place.

## **WINTER WEATHER POLICY**

If any of the following conditions arise, Powder Creek Shooting Park may not be open for daily business:

1. If area schools or events have been cancelled
2. If local roads are closed
3. If there is a weather forecast including any of the following:
  - Winter Weather Advisory / Warning / Alert in Affect
  - 100% Chance of Winter Precipitation to Occur Overnight or into the Next Day
  - Extreme Frigid Temperatures / Wind-Chills (Manager's Discretion)

## **ANNOUNCEMENTS**

Winter Weather Closures will be announced on the homepage of **[www.powdercreek.com](http://www.powdercreek.com)**, PC's Facebook Page, via Newsletter, and on the main office telephone answering machine when you call **(913) 422-5063.**

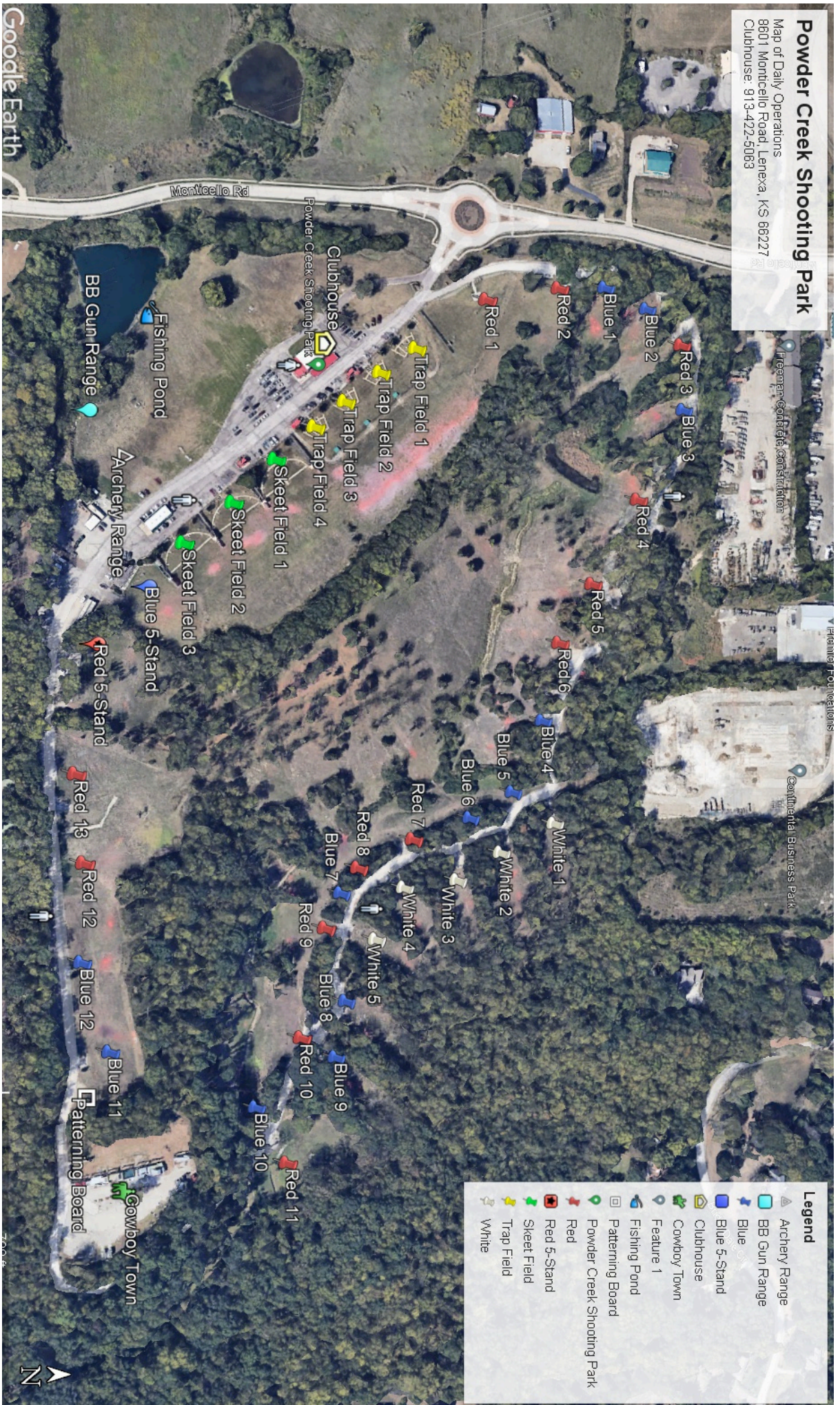
# Welcome to Powder Creek!

## NEW SHOOTER GUIDE: FOR ON YOUR OWN SHOOTING

<b><u>TARGET CARDS</u></b>	<ul style="list-style-type: none"><li>• This is where your targets are stored.</li><li>• You will need a target card to shoot at Powder Creek.</li><li>• <u>THIS TARGET CARD IS YOURS TO KEEP</u>- Your targets never expire on this card.</li><li>• <u>DO NOT LOSE IT</u>- If your card gets lost or stolen, there is no reimbursement or refund.</li></ul>
<b><u>SPORTING CLAY COURSE</u></b>  <b>BLUE TARGET CARD</b>	<ul style="list-style-type: none"><li>• Sold in groups of 50 or 100 clays.</li><li>• 30 sporting clay stations &amp; 3 difficulty levels. Map on pg 12.</li></ul> <p><u>White</u> = Introductory level (5 stations) <u>Blue</u> = Intermediate level (12 Stations) <u>Red</u> = Advanced / Expert level (13 Stations)</p> <ul style="list-style-type: none"><li>• If there is a special event, the reserved stations will be closed and will NOT BE FOR DAILY USE.</li></ul>
<b><u>TRAP</u></b>  <b>WHITE TARGET CARD</b>	<ul style="list-style-type: none"><li>• Sold in rounds of 25 targets.</li><li>• We have 4 Trap Fields located near the parking lot/clubhouse.</li><li>• Only 1 Shell in your gun at a time.</li><li>• Yell PULL to throw your targets or use manual pull.</li><li>• There are 5 positions to shoot from.</li></ul> <p>***Trap is best for warm-ups and beginners.</p>
<b><u>SKEET</u></b>  <b>WHITE TARGET CARD</b>	<ul style="list-style-type: none"><li>• Sold in rounds of 25 targets.</li><li>• We have 3 Skeet Fields located near the parking lot/clubhouse.</li><li>• Two Shells in your gun at a time.</li><li>• Yell PULL to throw your targets, or use manual pull.</li><li>• There are 8 positions to shoot from.</li></ul>
<b><u>5-STAND</u></b>  <b>GREEN TARGET CARD</b>	<ul style="list-style-type: none"><li>• Sold in rounds of 25 targets.</li><li>• We have two 5-Stands available, with 2 different difficulty levels.</li></ul> <p><u>Blue</u> = Intermediate (with Tower) <u>Red</u> = More Difficult (with Trees)</p> <ul style="list-style-type: none"><li>• Two shells at a time.</li><li>• You will need the 5-Stand remote to play this game, and we will need your ID as collateral.</li></ul>

# Powder Creek Shooting Park

Map of Daily Operations  
8601 Monticello Road, Lenexa, KS 66227  
Clubhouse: 913-422-5063



# RULES & REGULATIONS

---

The purpose of these rules is to ensure that all activities are conducted in a safe manner as to protect individuals and the organization, while promoting the shooting sports activities. Our mission is to provide a safe shooting environment, educational experience and enjoyment for our members. **Our goal is to protect our shooting heritage and to offer shooting opportunities for our members through education and instruction.**

1. ALWAYS treat all guns as if they are loaded at all times
2. ALWAYS keep firearms pointed in a safe direction
3. NEVER point a firearm at anyone at any time
4. ALWAYS keep the gun unloaded until ready to use
5. ALWAYS keep your finger off the trigger until ready to shoot
6. ALWAYS know your target and what lies beyond it

**Specific Shotguns Not Allowed:** AR platform shotguns (shotguns having a detachable magazine), shotguns with a pistol grip and no stock, or shotguns with a barrel length of less than 24 inches will not be allowed, unless otherwise approved by Powder Creek Management.

**Loading the Shotgun:** Do not load the firearm until it is your turn to shoot. You must be on a designated shooting station for trap and skeet or in the designated stands for 5-stand and sporting clays.

**Action open:** Always carry your shotgun with the action open until you are in a designated shooting position or stand and ready to shoot.

**Eye and ear Protection:** All persons, including observers, will wear eye and ear protection when inside the fence on trap and skeet fields, the 5-stand area, on the sporting clay courses or at the patterning board. Individuals assume all responsibility for any injury that occurs by not wearing eye and ear protections and agree to hold Powder Creek harmless.

**Number of shells in the Gun:** Never load more shells than allowed as listed below. Loading more than allowed ammunition is grounds for removal from premises.

- **Trap:** 1 shell at a time
- **Skeet:** Never more than 2 shells
- **5-Stand:** Never more than 2 shells
- **Sporting Clays:** Never more than 2 shells

**Target Loads Only:** Only LEAD shot is approved. Ammunition larger than 12 gauge consisting of 2 3/4" in length and 1 1/8 ounces of shot is NOT allowed. Only shot size of 7 1/2 - 9 are allowed. Shooting nonpermitted ammunition is grounds for removal from premises. If you are in question about your ammunition meeting this requirement, please ask management to confirm.

**I agree that I have read and understood these rules and that I will abide by such.**

# RULES & REGULATIONS

---

The club is a safe, friendly and respectful place for our members and visitors to gather in the spirit of fellowship, relaxation, and the recreational enjoyment of Shotgun Sports. All members, staff, guests, and visitors are expected to conduct themselves in a manner that treats other people and our property in a respectful and friendly nature at all times. **Any violation of the rules will be grounds for removal from the property. We reserve the right to restrict access to the property for any persons not adhering to these rules:**

- While waiting for your turn to shoot, be certain your position is safely behind the shooter and clear of their field of vision.
- Practice swings from behind a designated shooting position are not allowed.
- When exiting a designated shooting station, the shooter will ensure that the shotgun is unloaded and the action is open.
- Consumption of drugs/alcoholic beverages is NOT allowed before or during shooting. Alcoholic beverages are not allowed on any of the courses or fields.
- Never handle another shooters gun without permission.
- It is strictly forbidden to shoot any bird or animal while on Powder Creek property.
- If you are using an ATV, 4 wheeler, Gator or golf cart on the property we ask that you use extreme caution and respect of fellow shooters who are walking. Keep your speed to 10 MPH or less.
- Dispose of all empty shell cases in the trash containers.
- Comply with all directions and warnings as posted
- All individuals are required to report any safety violations, unsafe use of a firearm, act of vandalism, injury on the property, or violation of any rules while on the property.
- All pets are to be on a leash and under owner control except in the off-leash area. The designated off leash area is the grassy area near the pond.
- Anyone under the age of 18 must be accompanied and under supervision of an adult to handle any firearm unless the individual is approved by club management.
- Operation of any automobile is allowed only on designated areas.
- Members shall be considerate of other members while present at the club.
- Members will refrain from the use of obnoxious, offensive or abusive language.
- When a Powder Creek employee is in a trap house, an orange safety cone will be placed on top of the trap house, never activate the voice activated system or shoot.
- All firearms will be discharged from the shoulder.
- Only authorized persons are allowed in the trap and skeet houses or near sporting clays machines or mechanical lifts.
- If you see someone acting in an unsafe manner; politely mention it to them, referring to the appropriate club rules. If the situation continues or is ignored, report this to club management immediately.
- I assume all responsibility for my personal actions and waive for myself, administration, successors and assignees all claims or demands against Powder Creek Shooting Park or its agents, servants, employees or volunteers for any or all injury or loss occurring or arising out of my exercise of any privileges granted to me by this form.

**I agree that I have read and understood these rules and that I will abide by such.**



---

# YOU'RE ALL SET!



We know that this is a lot of information, so please reach out if you have questions or are unsure of any items in this packet. **Powder Creek** is always happy to help!



*Thank you!*

(913) 422-5063  
powdercreek.com