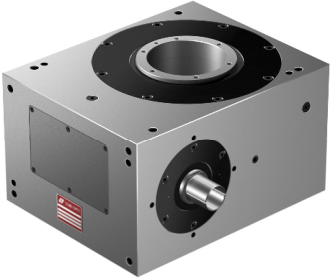


The first and best reference for any kind of repeatable movement linked with the highest precision and top performance.

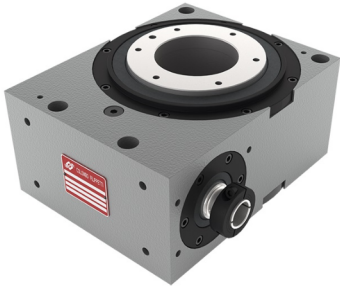
SRI — Servo Roller Indexer



The **Servo Roller Indexer** can work in a wide range of conditions, involving extremely low speeds as well as high speeds with medium loads. The constant velocity spheroconical cams allow high speed, fluid and precise movement. The large central through-hole on the output disc allows a comfortable passage for the interlocks and supplies required for system operation.

Three sizes available: SRI80, SRI105, SRI130.

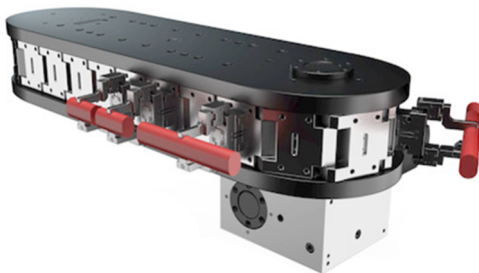
SRP — Servo Roller Positioner



The **Servo Roller Positioner** has as a rigid output turret with a wide central hole supported by a pair of oversized roller bearings and a precise, pre-loaded, constant velocity globoidal cam, allowing for a high reduction ratio (higher torque). The cam design and the preload between cam and output turret allows a highly rigid, precise, and backlash free movement in any position.

The unit is pre-arranged for standard specific and user programmable servo-motors.

SFC — Servo Flexible Conveyor



The **Servo Flexible Conveyor** is designed to ensure high repeatability in link positioning along the transport path with a constant chain tensioning system. The SFC's mechanical robustness and build quality guarantee continuous, uninterrupted operations. The modular design allows for quick expansion or reconfiguration to adapt to new requirements.

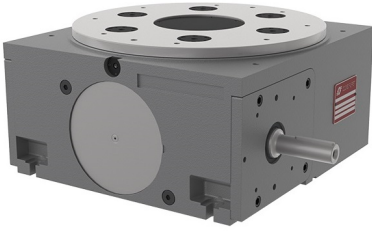
Available with link lengths of 50mm, 100mm & 150mm.

RIG — Rigidial Indexing Table



The **“RIGIDIAL” INDEXING TABLES** are globoidal cam units that transform a uniform rotary input drive into a series of equal output motions. The indexing plate is supported by a large diameter cross roller bearing that can withstand considerable axial and radial forces while retaining high levels of accuracy and rigidity. The globoidal cam ensures excellent wear resistance and the pre-loaded cam followers provide accuracy in positioning. Available with 2 to 32 stops, with either a cover seal, fixed through hole or fixed central through hub.

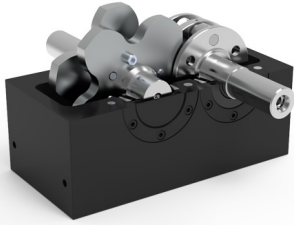
IR — Heavy Duty Rotary Table



The **Indexing Rotary** tables of the “IR” series are cylindrical cam mechanical units that transform the uniform rotary motion of the input shaft into an indexing rotary motion of the output dial plate. With 17 standard models to choose from, the IR has large crossed-roller bearings to support the load, can accommodate dial plate diameters from 185mm to 2000mm, shaft mounting in either vertical or horizontal orientation and handles up to 180 Nm of transmitting torque.

Available with 2 to 34 stations.

CF3 with Parabolic Axes (Indexer or Oscillator)



The **CF3** drives are double flat cam mechanisms with complementary profiles that are used to transform the uniform input rotary motion into an intermittent motion. The **CF3 Oscillating** drives utilize double flat cam mechanisms with complementary profiles to transform the uniform input rotary motion into an output oscillating motion. Like other products from CoFil, the mechanism can be manufactured with different motion laws and special cycles, on demand.

Tandem CF3



The **Tandem CF3** is a mechanism that combines, inside one box, two groups of complementary profile cams and roller followers of the CF3 series.

The uniform rotary motion of the single input shaft is transformed into two intermittent rotary motions, one motion for each output shaft. The output shafts can be unidirectional indexing or bi-directional oscillating. All motions are perfectly phased and synchronized.

MAN — Manipulators



Manipulators combine globoidal and groove cams in a single piece, transforming uniform rotary input into a synchronized linear and rotary motions of the output shaft where the gripper devices are fitted. They provide precision, speed, smooth gentle movements, low vibration, silent working, simple manufacture, compact size, oil-bath lubrication of the internal parts, easy installation and a wide range of the output shaft motion cycles.

H.. S - Rotary Manipulator



H.. S are conjugate double-cam mechanisms that transform the input uniform rotary motion into the typical motions of the rotary pick and place, i.e. rotary intermittent motion and linear alternate motion. Also available, on request, a wide range of special applications, designed and manufactured during CoFil's 50 years of experience, a unique and unequalled heritage.



Colombo Fillipetti is proudly represented in the Carolinas by **Dixon Engineering & Sales**

Company. Contact your sales representative today for more information:

SC - Jack Dixon (704-290-7373)

NC - Brian Barefoot (704-655-0411)